



ȘJ

ștefan jurcă
portfolio '25

-- profile --

house of music sendai



tanzhaus berlin



just a reflector



yoshimura house



-- geofiction --



-- photography --

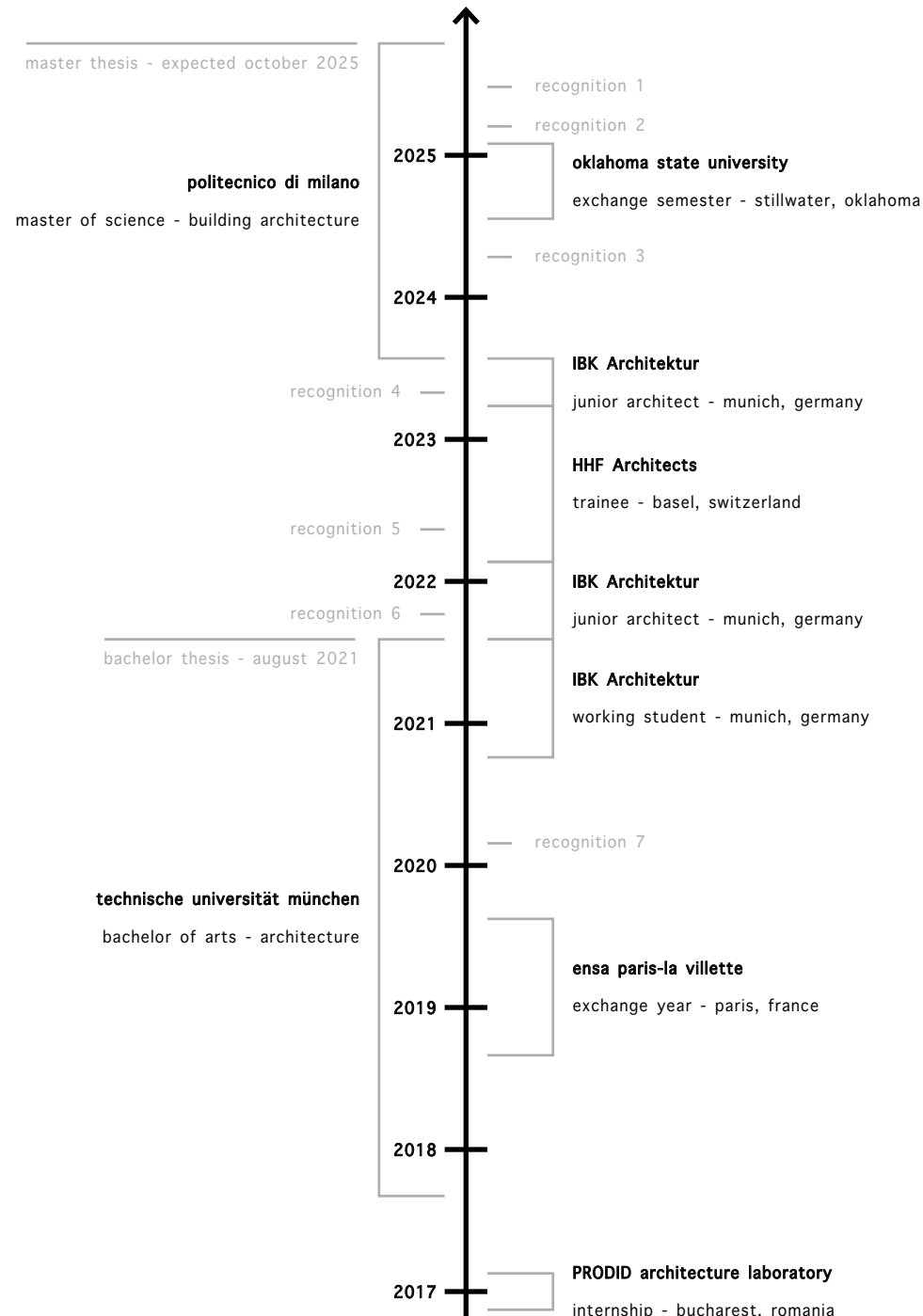
all work shown in this portfolio was produced by
me, stefan jurcă; collaboration is indicated where
it occurred.



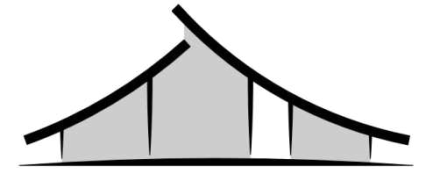
- stefan jurca
from bucharest, romania;
raised in munich, germany.

master's candidate;
aspiring architect.

looking forward to re-entering the
architectural field after my master's,
bringing both academic insights and
real-world experience to a new team.
- milan, italy
→ open and eager to relocate
- jurca.stefan@gmail.com
- +39 375 831 3847
- stjur.me
- languages
 - romanian (native)
 - german (native)
 - english (c1 toefl + ielts)
 - french (advanced)
 - italian, portuguese, spanish, japanese
→ basic knowledge, can be improved



- recognition
 1. atlas of ruins: photo feature (p.189) ↗
 2. IES illumination award: OSU project
 3. Wesgroup pavilion: honorable mention ↗
 4. off the grid 2023: 3rd place ↗
+ interview ↗
 5. BIS dev.: afasia archzine mention ↗
 6. pietonala intre parcuri: winner ↗
+ news article ↗
 7. prof. Kéré: project feature (3/4) ↗
- areas of practice
 - architecture competition
 - HHF: BIS development [REDACTED]
 - IBK: leipziger bahnhof ↗
 - HHF: arealentwicklung brügglimatt; etc.
 - design development
 - [REDACTED]
 - [REDACTED]
 - HHF: nauentor basel ↗; etc.
 - detailed design
 - [REDACTED]
 - [REDACTED]
 - [REDACTED]
- softwares
 - main:
 - Autodesk Revit
 - Adobe Indesign
 - Adobe Photoshop
 - Vectorworks
 - Rhino 3D
 - D5 Render
 - additional:
 - ArchiCAD
 - Lumion
 - Adobe Premiere Pro
 - Grasshopper
 - Cinema 4D
 - Enscape



house of music sendai (two interim stages)

politecnico di milano

complex construction studio 2

master year 2; semesters 1+2

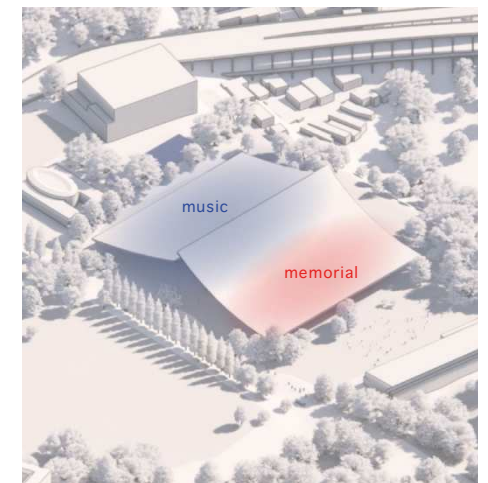
master thesis

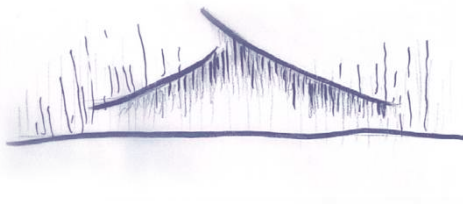
january 2025; july 2025

prof. Maria Grazia Folli; prof. Corrado Pecora +

collaboration with: Sajjad B. & Ylber K.

using: revit, vectorworks, rhino, d5

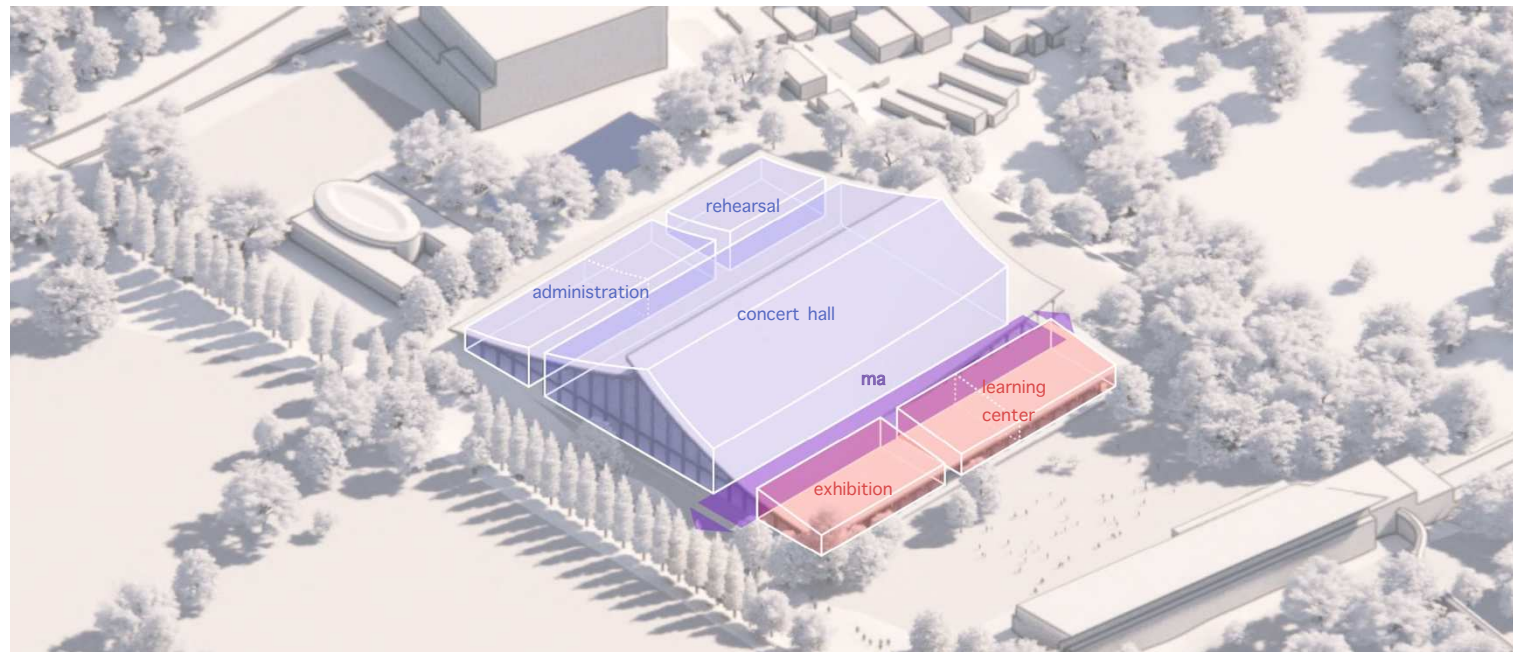
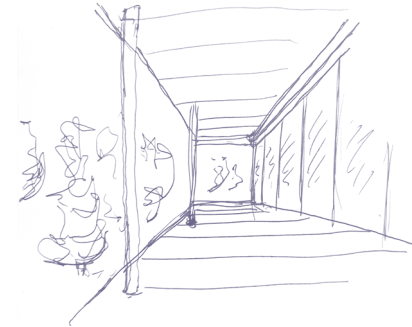
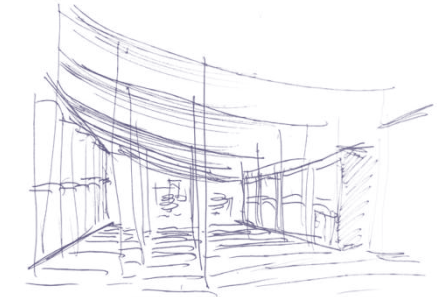
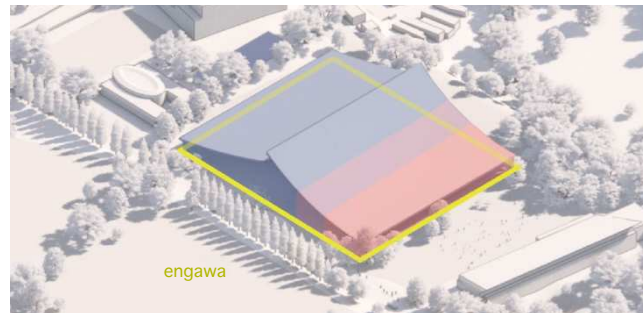
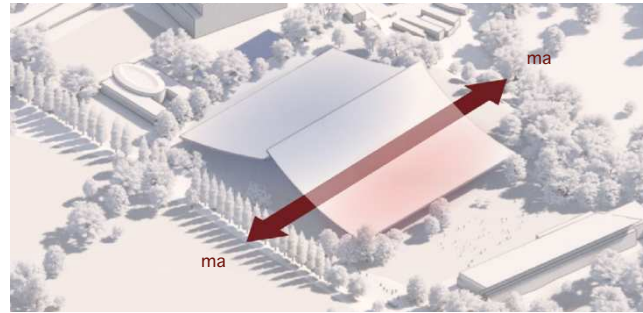


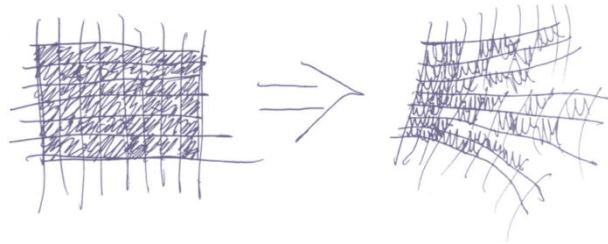
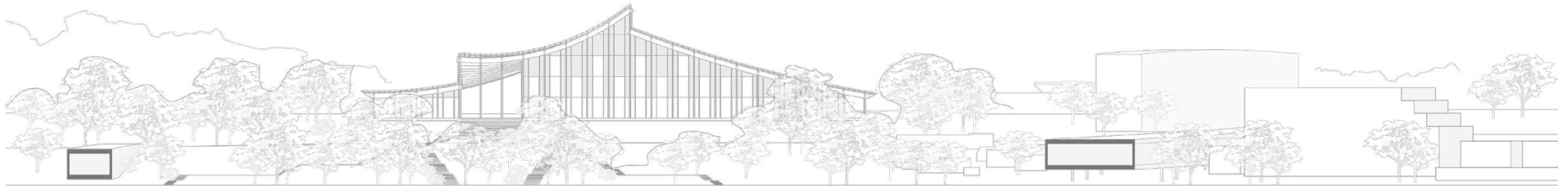


-- stage 1 (january 2025) --

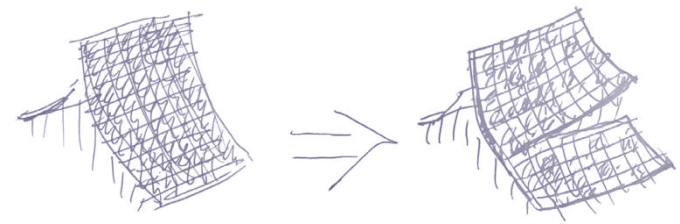
this iteration of the design integrates traditional japanese spatial concepts to structure the building. **ma** defines the voids and intervals between volumes, creating framed views and clear circulation. **engawa** appears as continuous covered edges that transition between interior spaces and the landscape. **komorebi** informs the roof and facade treatments, using filtered daylight to animate the interiors. These elements establish a clear relationship between the concert hall, memorial functions, and the natural context.

the building is conceived as a single overarching volume defined by a continuous roof. internally, it is structured into two primary zones: the music functions, including the concert hall and rehearsal spaces, and the community functions, such as exhibition and gathering areas. **ma** separates these zones, acting as the main circulation axis and establishing clear spatial orientation. the volume is oriented towards the river and downtown, to optimize views and integrate with the site's surroundings.

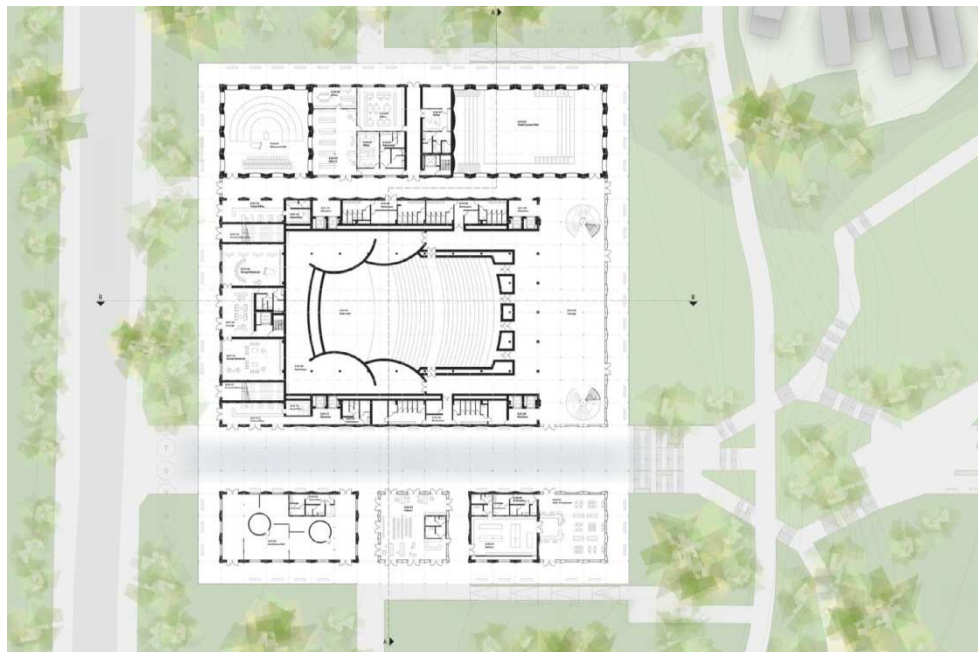




komorebi - "light filtering through leaves"



closed canopy -> permeable canopy



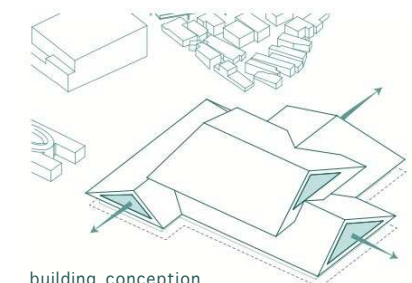
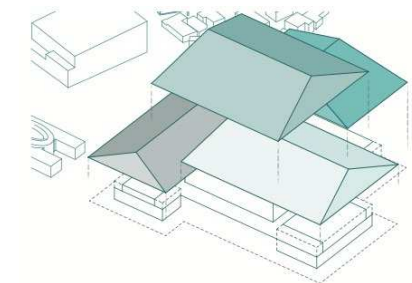
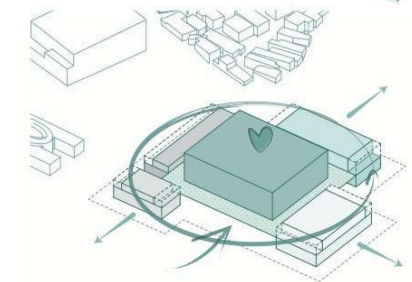
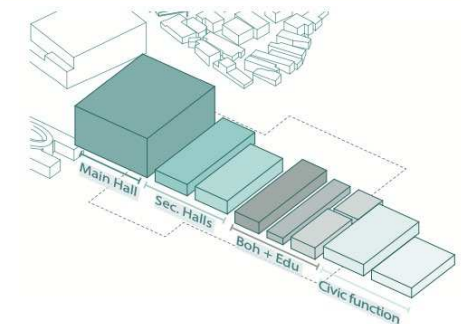


-- stage 2 (july 2025) --

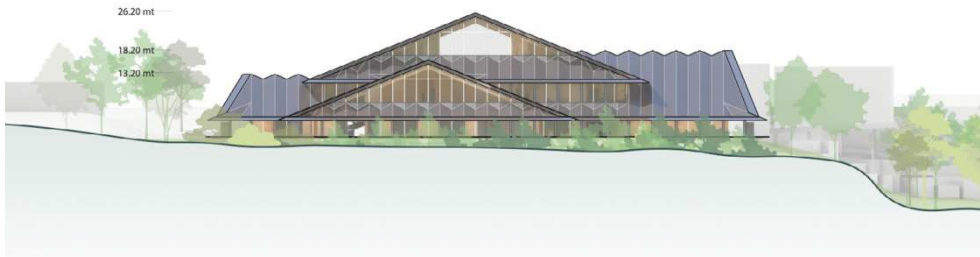
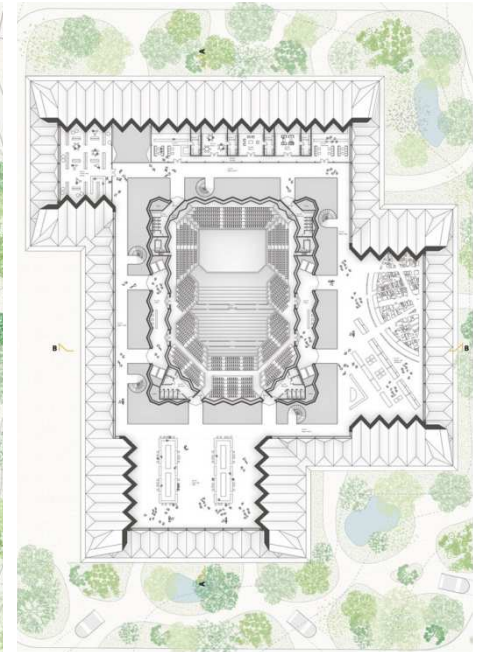
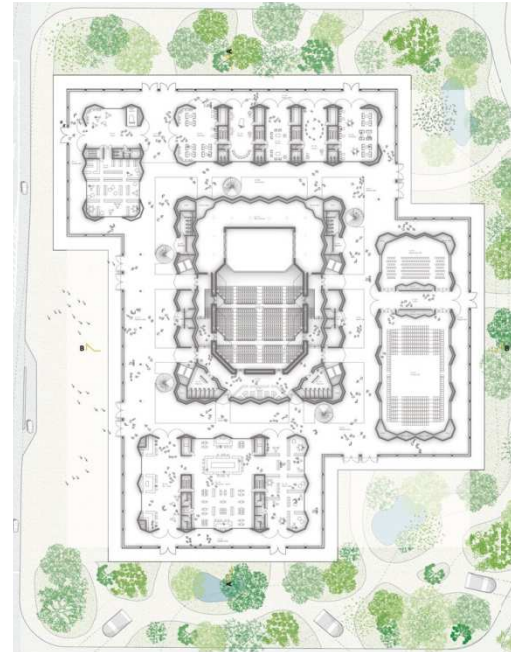
the volumetry of this iteration consists of a central main volume containing the concert hall, which defines the tallest and most prominent mass. surrounding it, three clusters house front-of-house areas, secondary musical functions, and back-of-house spaces. A two-level ring circulation separates and connects the core and the peripheral volumes.

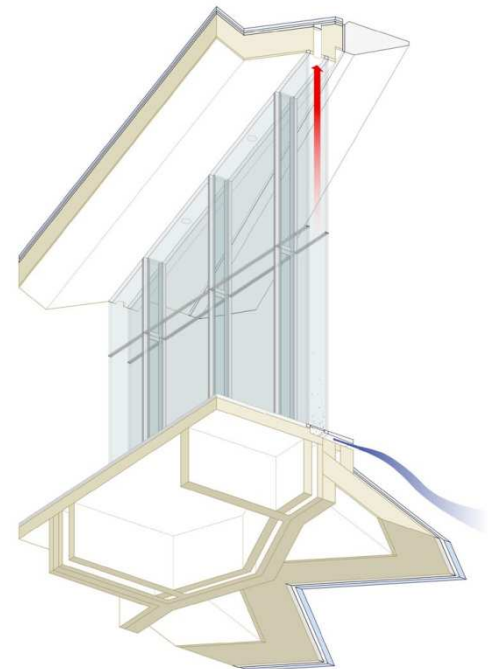
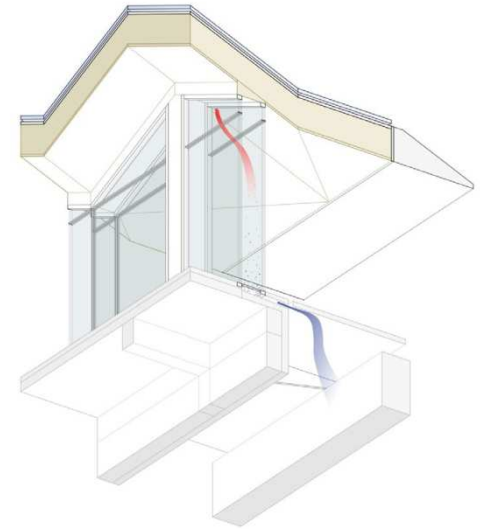
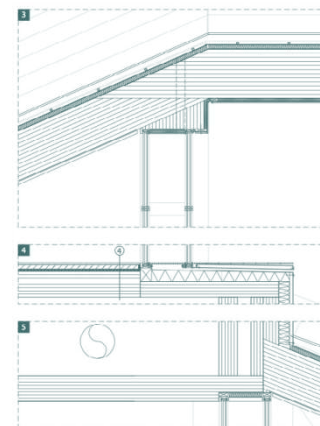
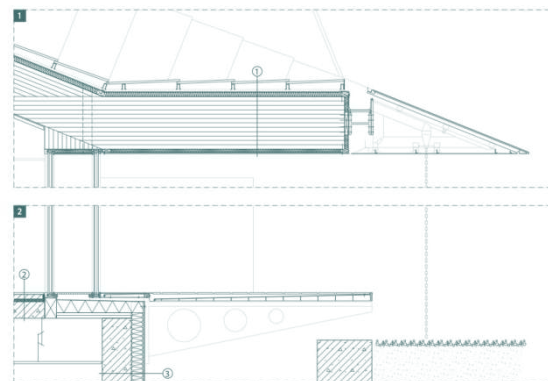
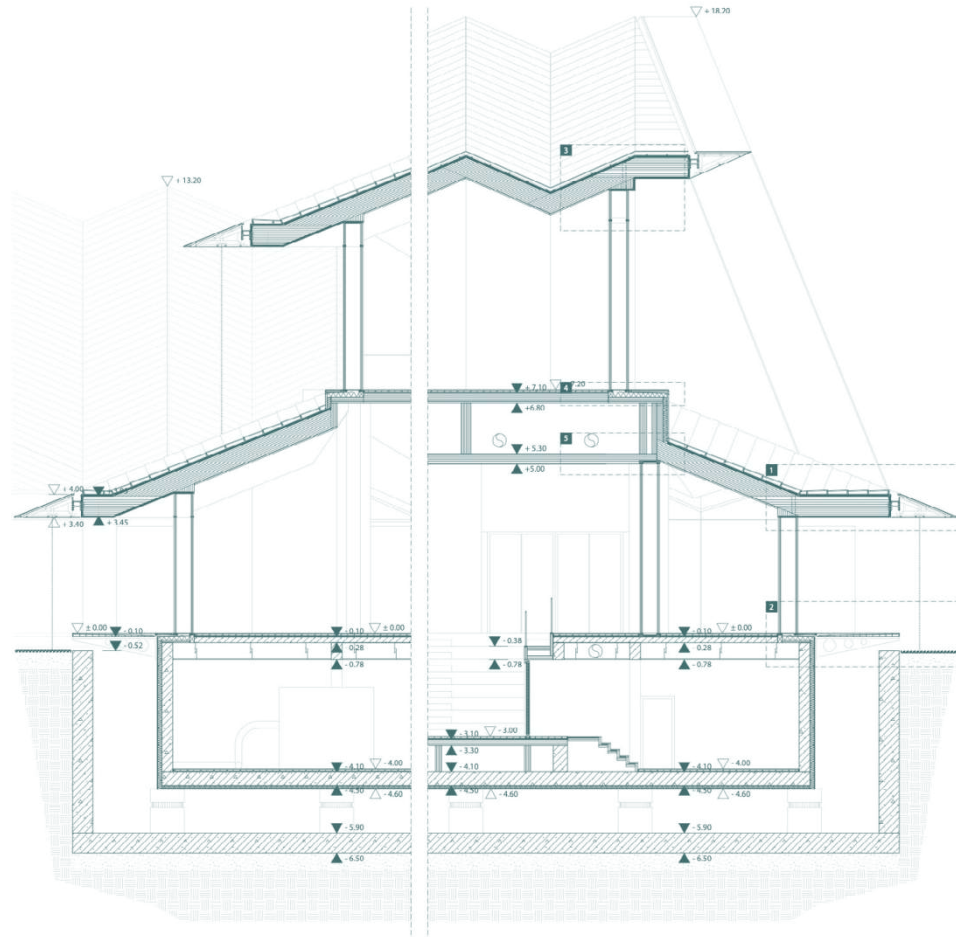
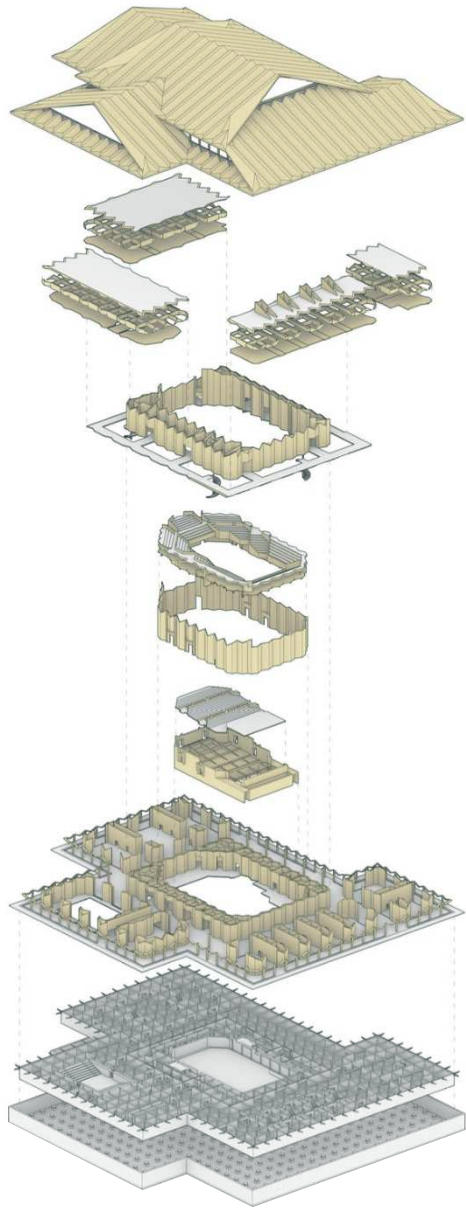
the building is composed of a series of japanese irimoya roofs, forming an overarching system subdivided into multiple pitched segments aligned with each programmatic cluster. the hierarchy remains clear: the central hall is marked by the highest roof and the largest volume.

upper levels of the three secondary irimoya roof volumes are oriented to specific views and house large halls named accordingly. the **aoba hall**, a gala space, faces aoba castle. the **sendai hall**, used for exhibitions, overlooks downtown sendai. the **tohoku hall**, containing the library, opens toward tohoku university and the tohoku mountains. these views reinforce the building's connection to its surroundings.



building conception







tanzhaus berlin

technische universität münchen

lehrstuhl für städtische architektur

bachelor year 4; semester 2

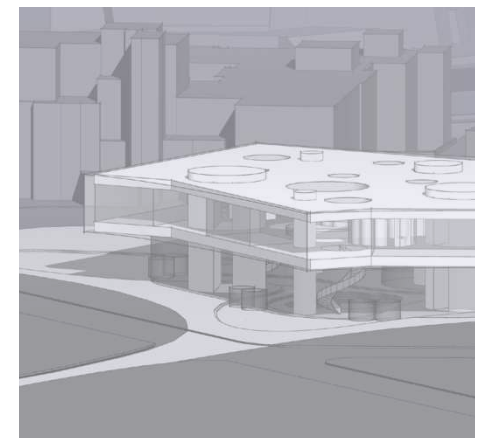
bachelor thesis

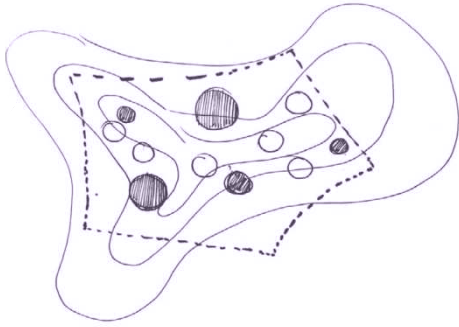
august 2021

prof. Dietrich Fink

collaboration with: Hadil K.

using: vectorworks, sketchup, rhino, d5





-- a process... --

"tanzhaus berlin" focused on developing architectural spaces for dance through an iterative design process (see bottom right).

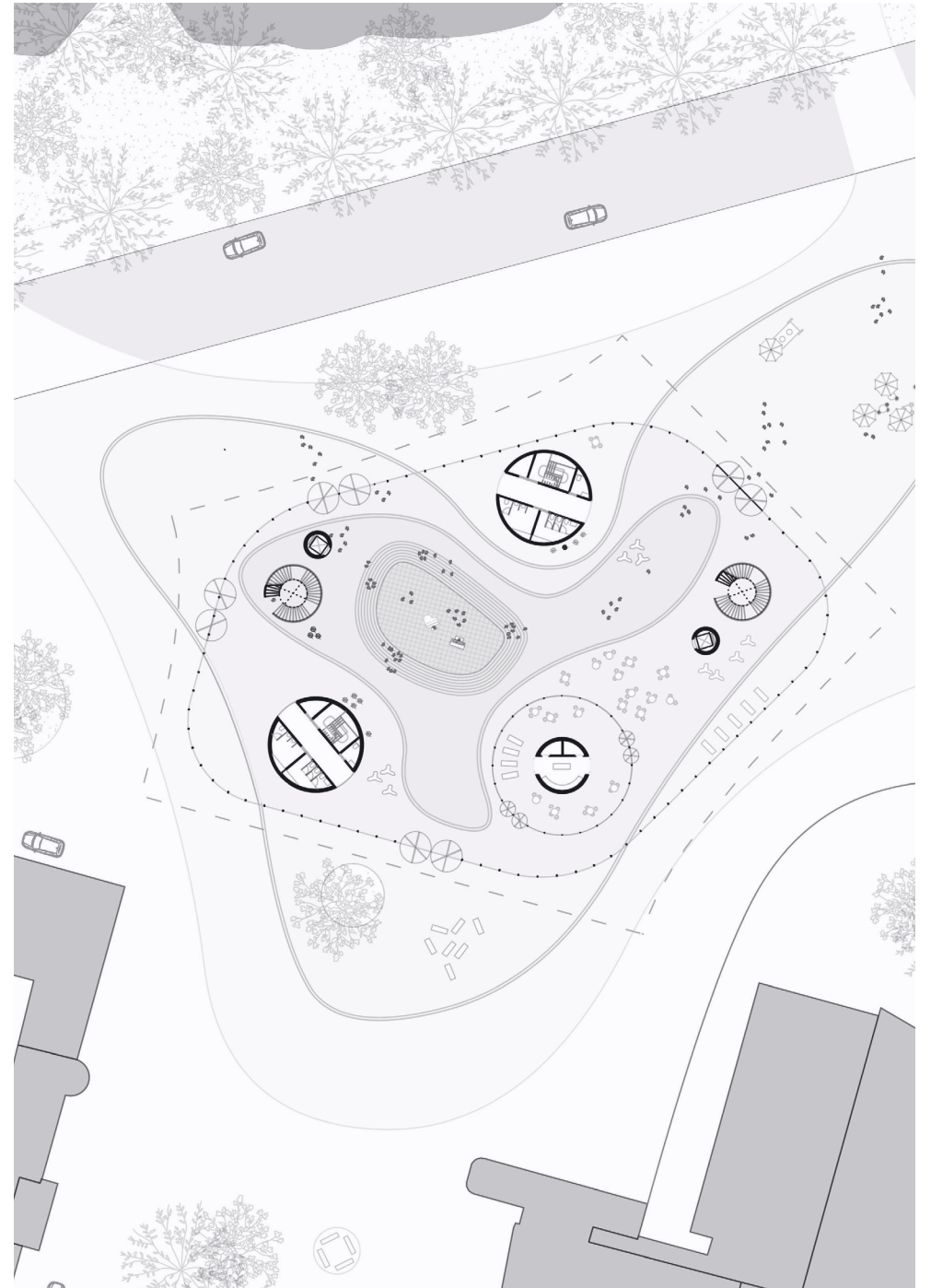
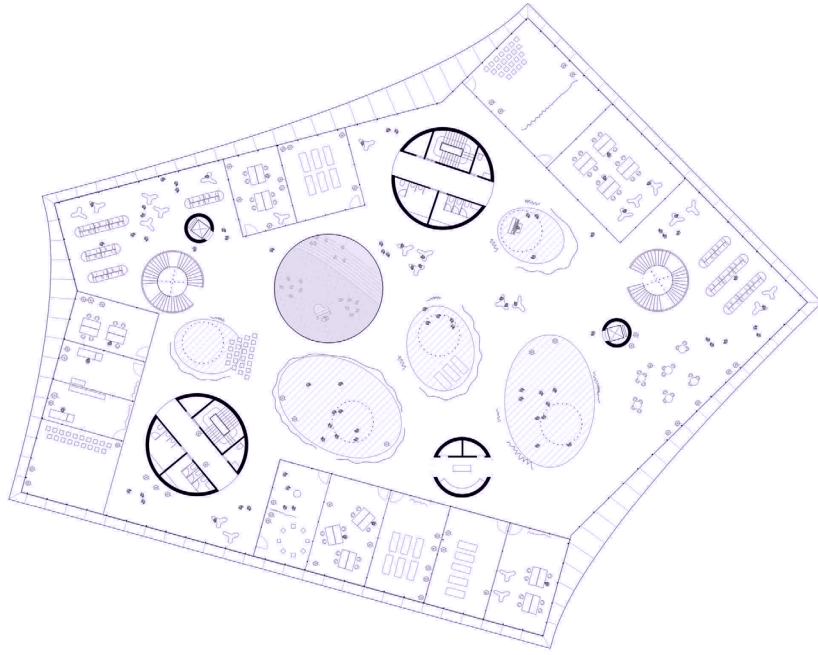
the building has two main levels. the lower level contains a semi-public dance hall recessed below street level. an artificial topography defines circulation and creates areas for informal gathering and performance. the main skylight provides visual connection to the upper floor.

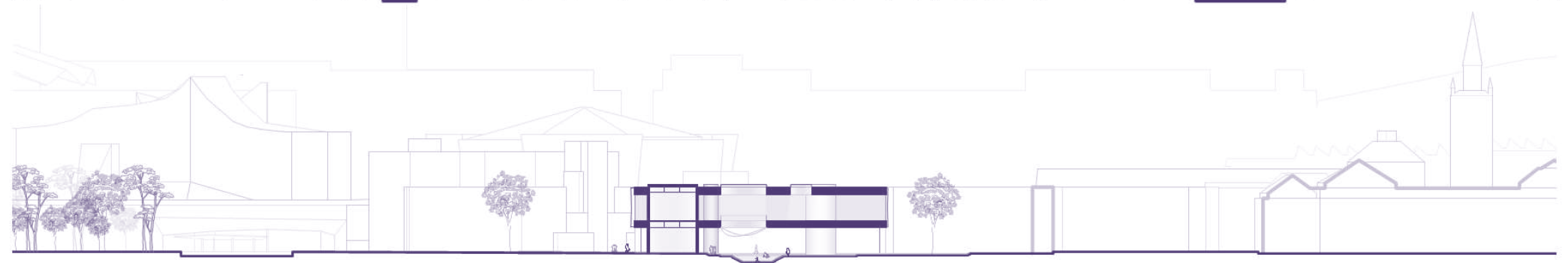
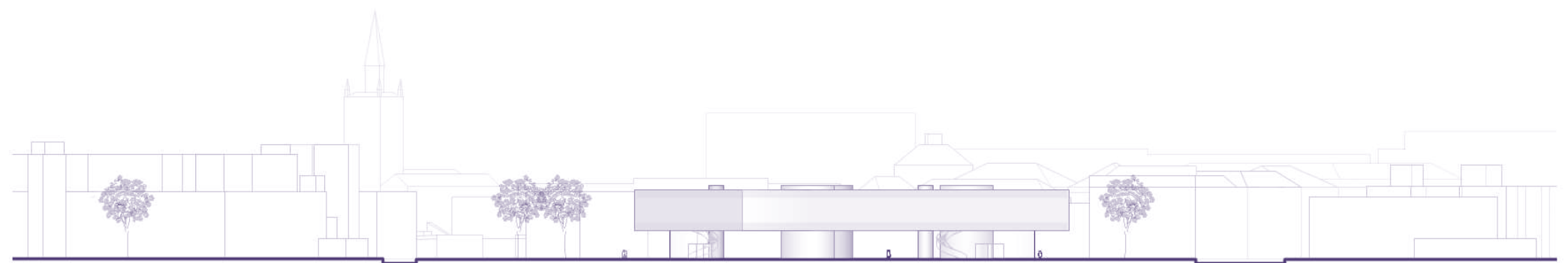
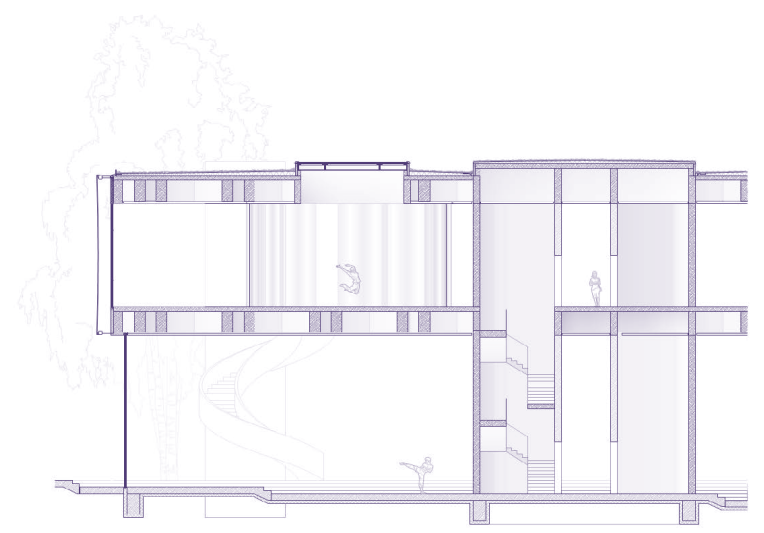
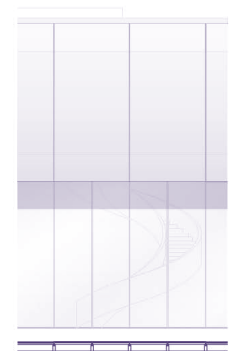
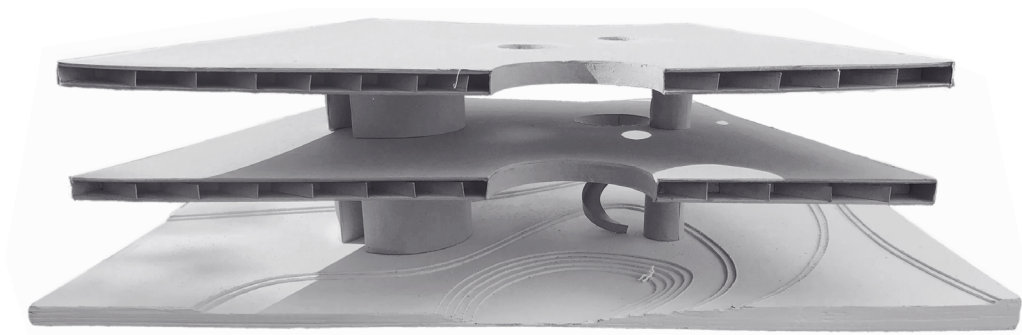
all secondary functions, including vertical circulation, wet rooms, and storage, are integrated into structural vertical elements.

the upper floor contains rehearsal studios, smaller dance halls, a library, and administration.

a 1.2-meter concrete substructure in the ceilings allows large column-free spaces. the design emphasizes clear organization and efficient spatial distribution.









just a reflector

oklahoma state university

integrative design studio

master year 2; semester 1

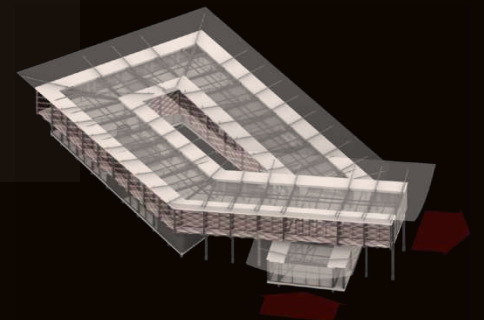
december 2024

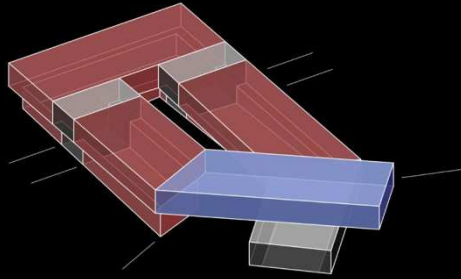
prof. Keith Peiffer; prof. Khaled Mansy +

collaboration in early stages with:

Emily S.; Abbey S.; Ian S.

using: revit, rhino, enscape, vectorworks





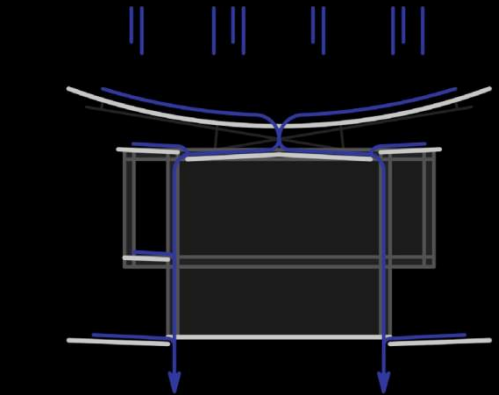
-- arts hub --

developed during a semester focused on environmental design, the project applies passive strategies for daylighting, ventilation, and water management.

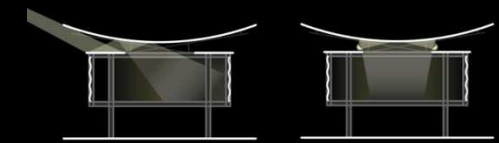
the building is positioned on the southern edge of the oklahoma state university campus and is shaped by two main axes, forming an ascending volume around a central atrium. program areas such as maker spaces, classrooms, and administration are arranged along a circulation sequence linking the campus edge to the interior.

a floating roof is used as a large-scale reflector to diffuse indirect light, support natural ventilation, and collect rainwater through an integrated drainage system.

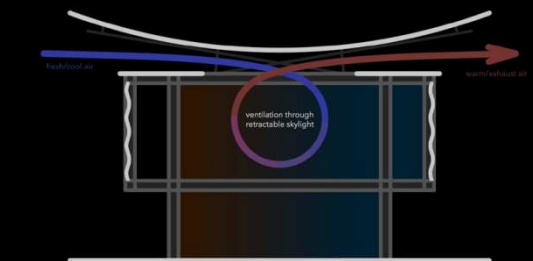
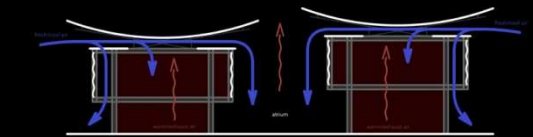
construction assemblies were detailed to combine environmental performance with structural clarity.



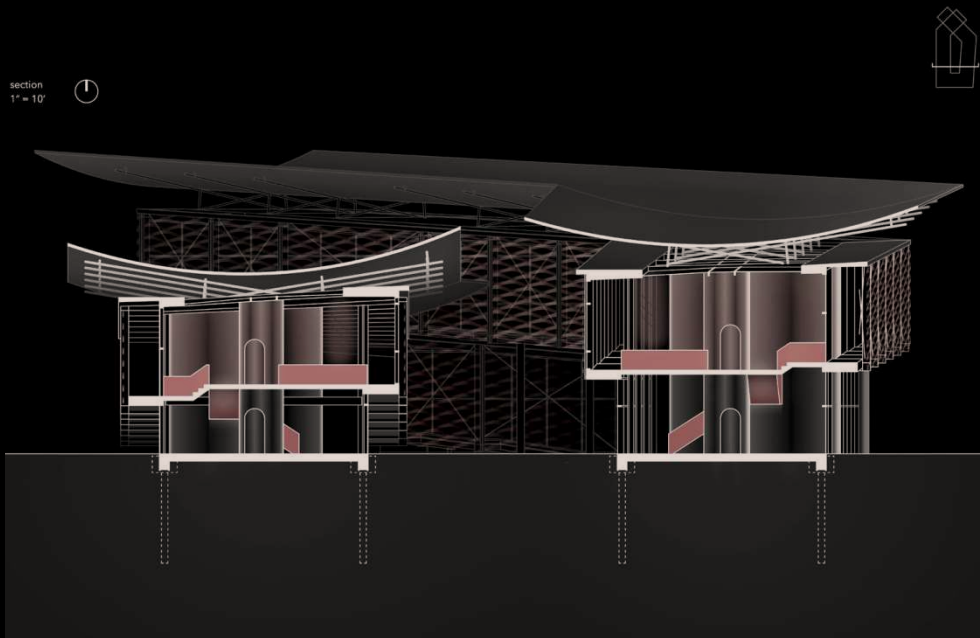
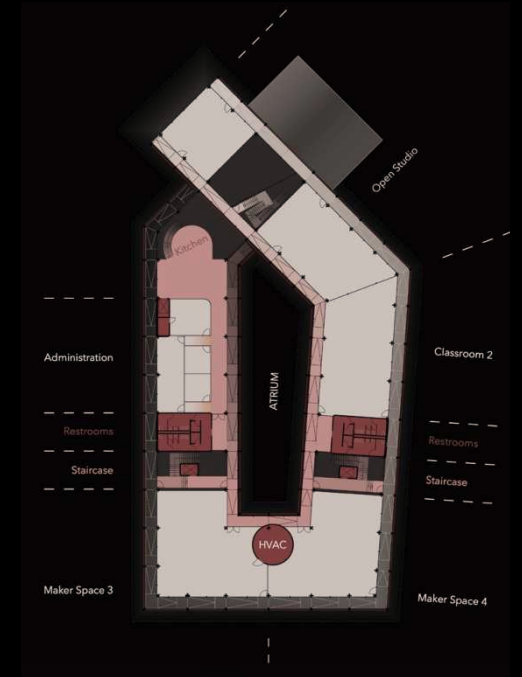
water drainage strategy



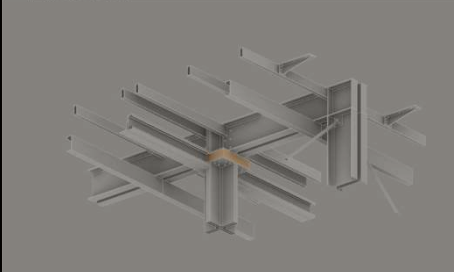
lighting strategy



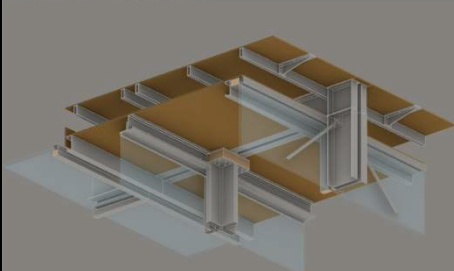
ventilation concept



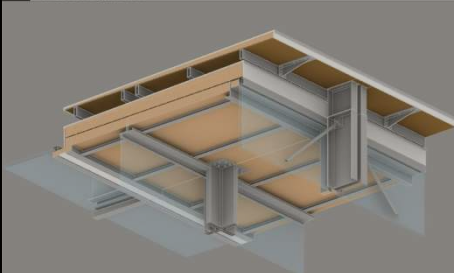
3 Gypsum Brackets 2" x 8" required to reinforce the connection, preventing wind uplift from displacing the OSB plate (4) direct bolting to Rectangular HSS



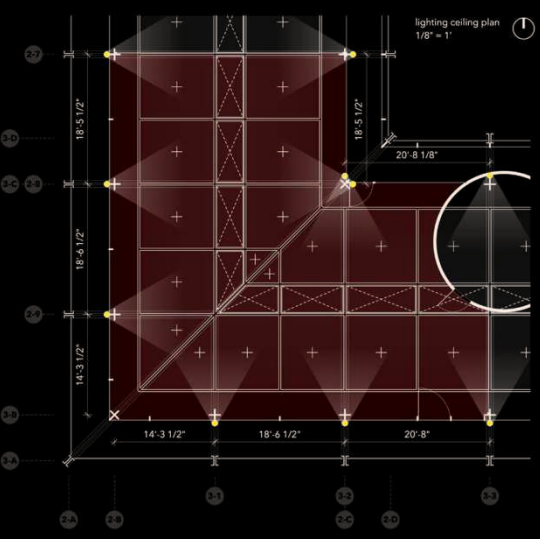
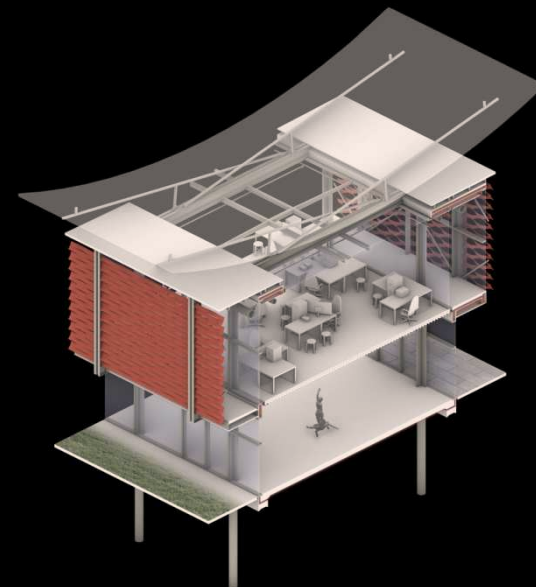
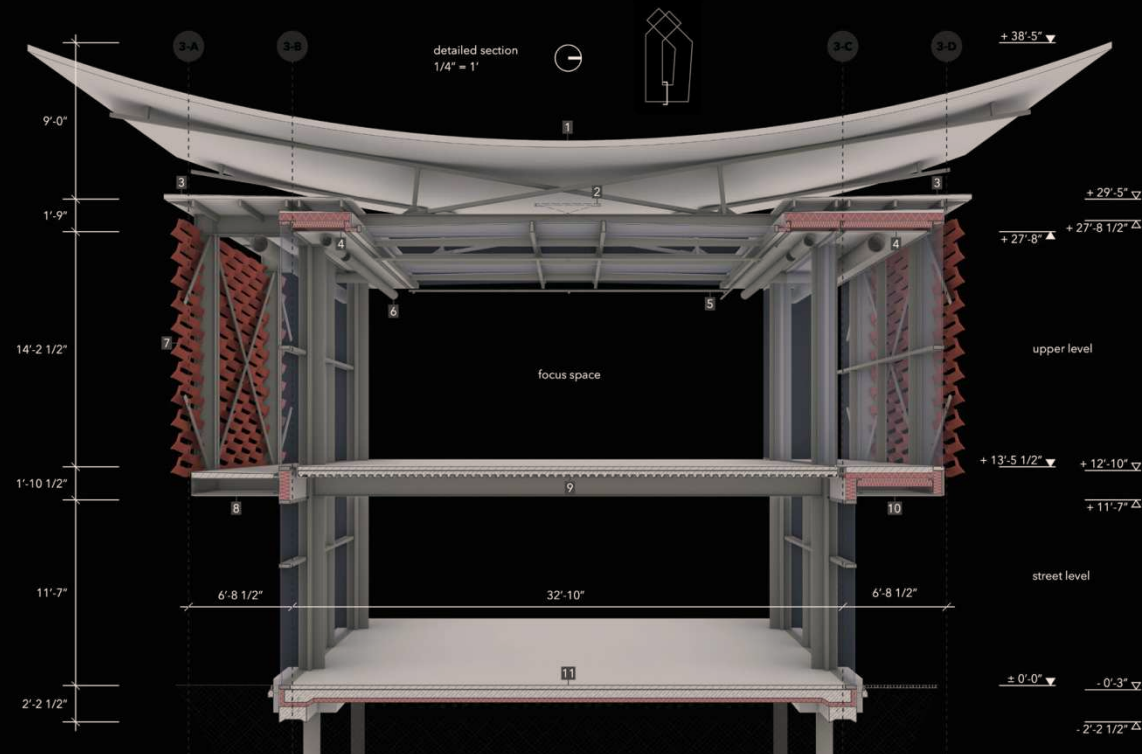
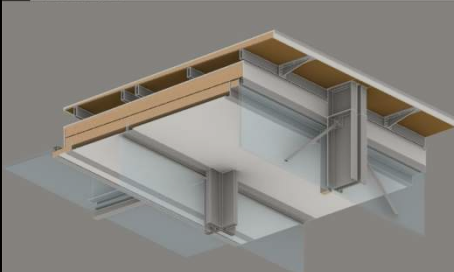
5 Fenestration + Interior Walls 2" x 7" mullions + 2" Triple Quarter Glass 2" x 1" U Glass Channels + 0.6" Tempered Glass Interior Wall



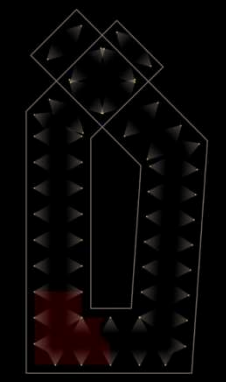
11 Support Structure for Suspended Ceiling Panels W7x4x5 T-Bar Ceiling Profiles Bolted to the secondary steel structure



12 Suspended Ceiling Panels 1/2" Gypsum boards Bolted to T-Bar ceiling profiles



- 1 reflector - water resistant floating roof out of steel square hollow section steel substructure
 - 2 pop-up skylight - for natural ventilation purpose
 - 3 tilted light shelf from steel
 - 4 steel cover, moisture-resistance gypsum boards
xps
vapor barrier
osb panel
spray foam
air layer
double gypsum board
 - 5 sprinkler system
 - 6 hvac duct system
 - 7 expanded metal sun screens in corten steel
 - 8 epoxy
tilted screed
osb panel
 - 9 epoxy
screed
acoustic underlayment
metal deck profile + concrete
neoprene pad
 - 10 epoxy
screed
xps
vapor barrier
osb panel
spray foam
 - 11 epoxy
screed
reinforced concrete
xps
vapor barrier
gravel
- typical elevation
1/4" = 1'



lighting plan (ascending block)
1" = 40'

focus space
luminaire and beam angle



yoshimura house

archiol.com

off the grid 2023 - idea competition

3rd place

april 2023

collaboration with: Hlib N.

using: rhino, vectorworks, enscape

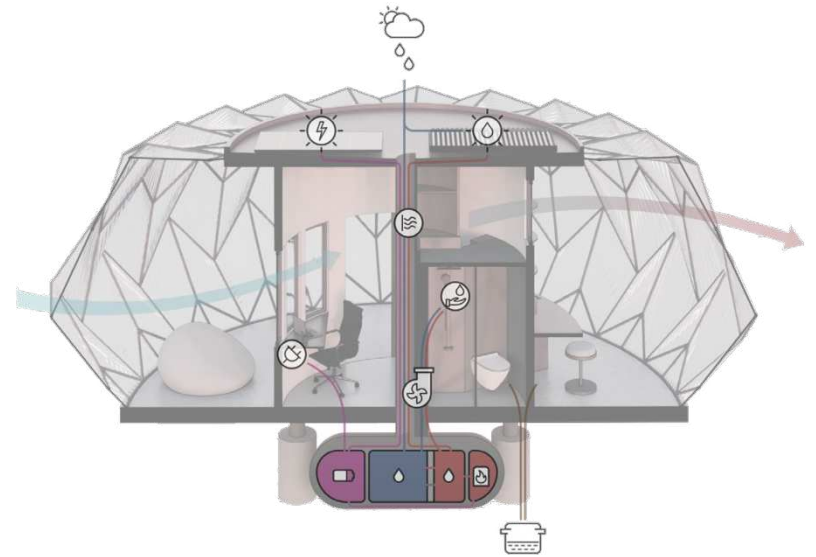
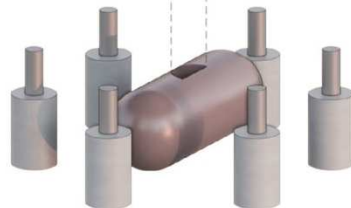
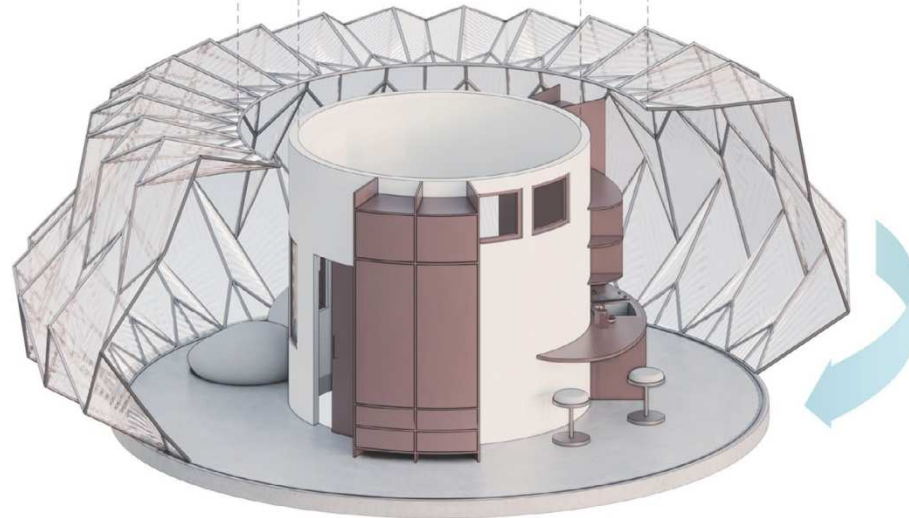
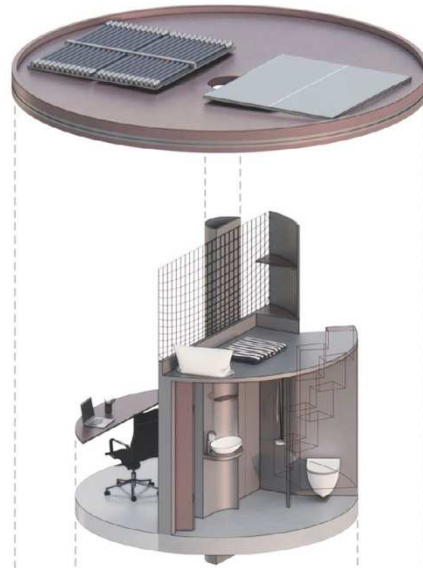
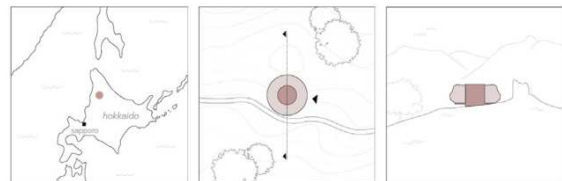


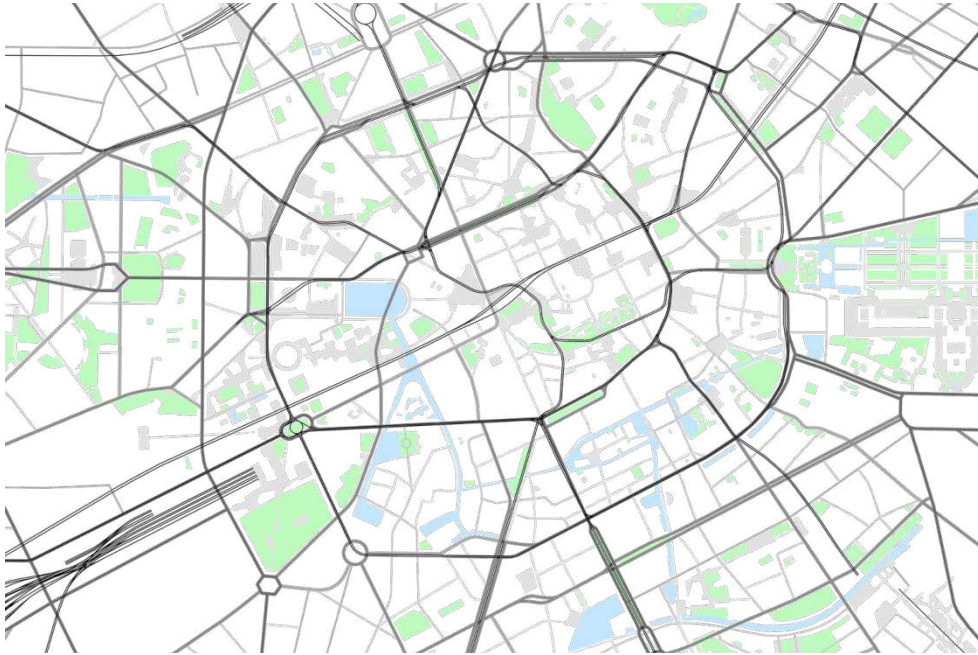


the yoshimura house is a self-sufficient off-grid dwelling with a 37 m² footprint. it is situated in a mountainous area near sapporo characterized by temperature fluctuations and high precipitation. prefabricated modules are used to allow transport and assembly with minimal machinery. its hemispherical shape reduces the surface-to-volume ratio and improves energy efficiency.

the interior is organized into an insulated inner circle and an outer circle functioning as a thermal buffer or terrace when opened. an origami-patterned polycarbonate shell provides structural stability, wind resistance, and partial insulation.

the layout includes a sleeping area above the bathroom, a kitchen and foyer in the northern half, and living and work spaces in the southern half. rainwater is collected in a buffer tank, heated by solar collectors or a compact heater, and used for domestic needs and heating. electricity is supplied by a photovoltaic panel and battery.





-- geo fiction --

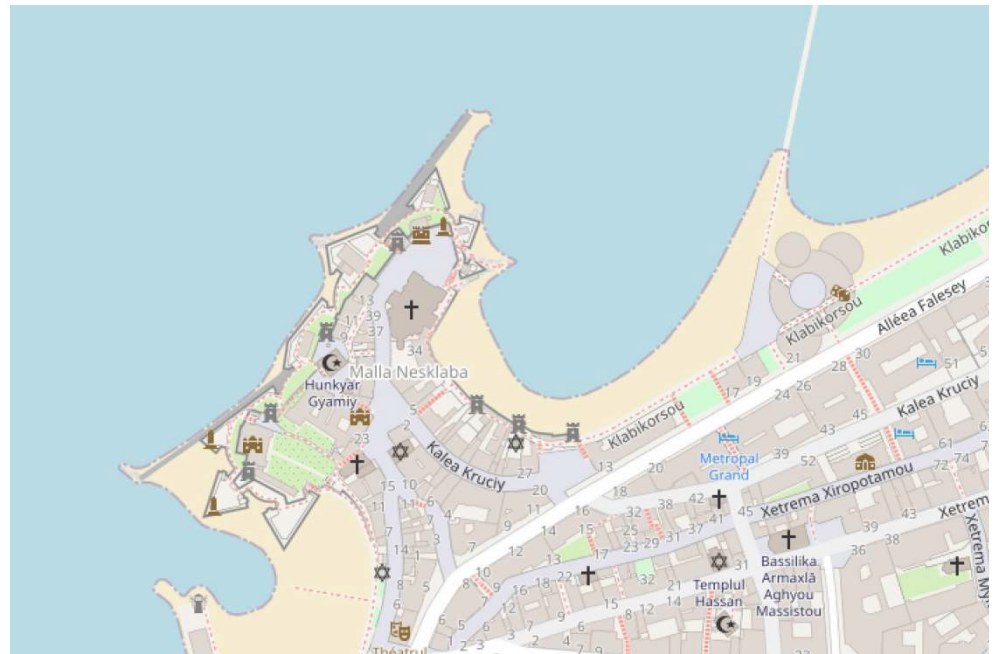
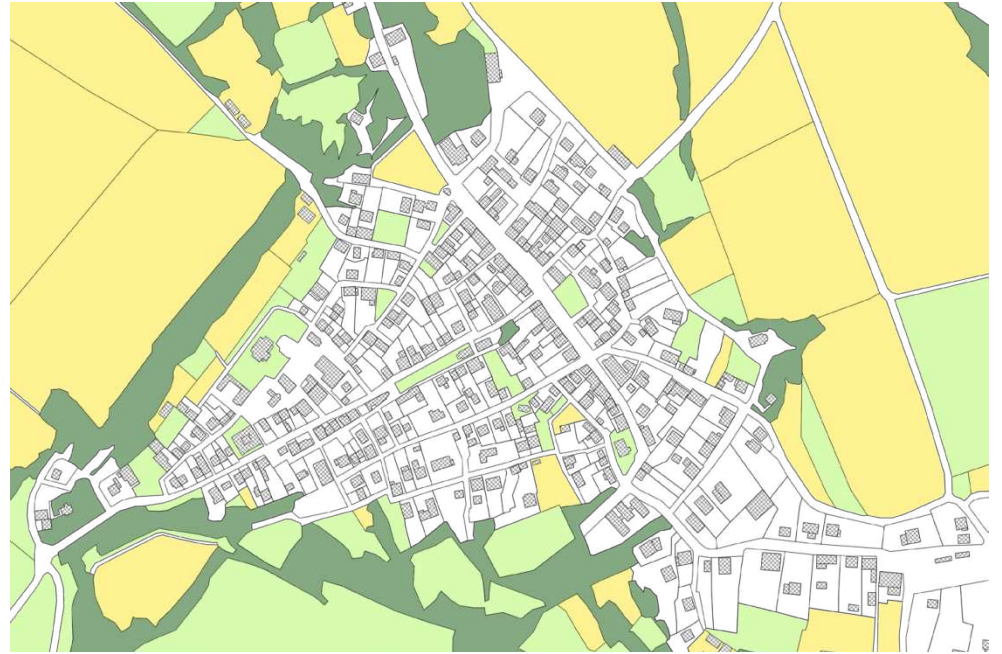
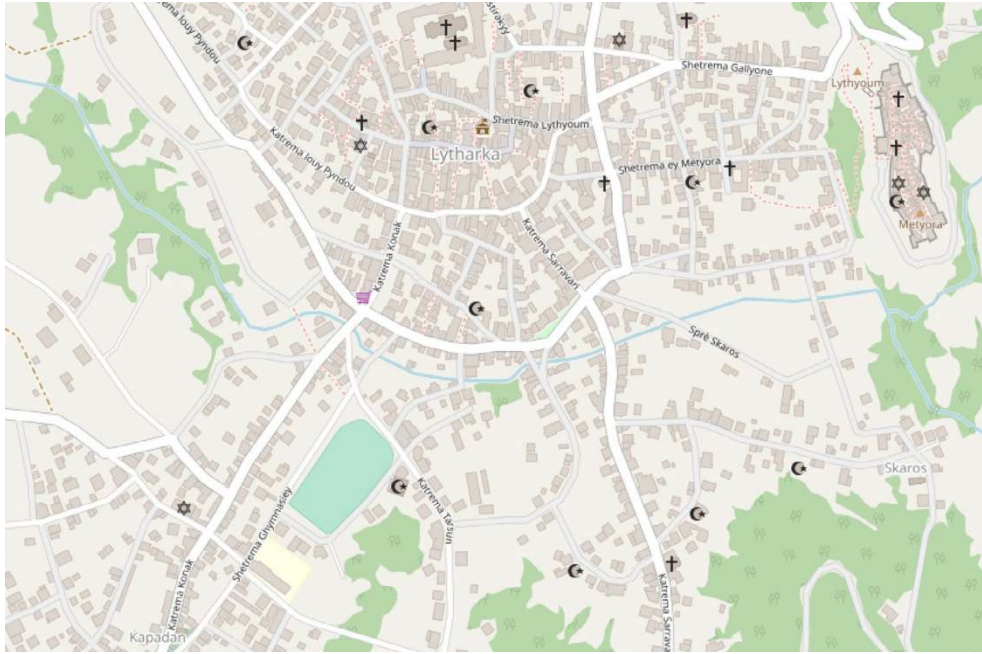
using: JOSM, QGIS, opengeofiction.net renderer

for over 15 years, i have engaged in fictive cartography (geofiction), developing detailed maps of hypothetical urban environments. this practice includes the design of street networks, public spaces, ecological corridors, and transportation systems.

through this work, i have gained experience in analyzing urban form, modeling spatial hierarchies, and representing complex infrastructural relationships. the process has strengthened my ability to conceptualize and document urban systems in a clear and structured manner.

geofiction has been an ongoing independent project that has informed my perspective on architecture, urban planning, and the role of spatial narratives in design.







-- photo graphy --

using: olympus e-m10, lumix s5, adobe photoshop



i began in architectural photography by documenting historical buildings in romania for online publication. my focus has since shifted to artistic photography that explores the relationship between architecture and light.

i work primarily with an olympus e-m10 and a 9mm lens, using photo stitching for wider angles, and adobe photoshop for post-processing. with the addition of a panasonic lumix s5, i am expanding my approach and exploring new techniques.

